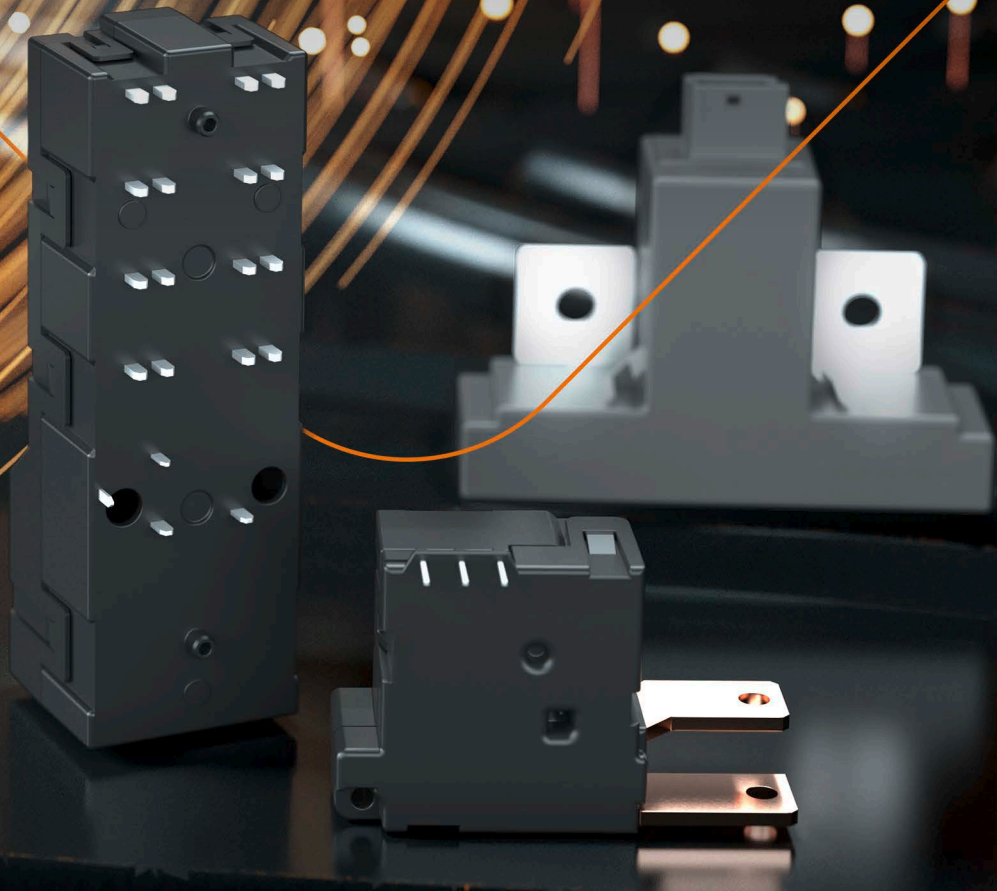


GRUNER RELAYS

**SOLUTIONS FOR EV-CHARGING,
ENERGY-MANAGEMENT,
BUILDING-MANAGEMENT, AND
INDUSTRIAL APPLICATIONS.**



CHARGE AT HOME CONVENIENTLY AND SAFELY

**Gruner 802 relay – mechanically
linked 4-pole mains disconnect relay
with high resistance to short circuits**



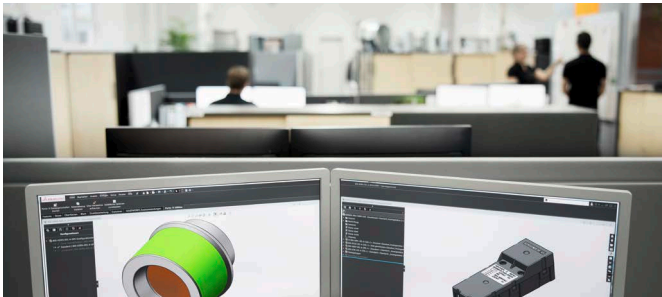
In accordance with the requirements of IEC 62955, Gruner has developed a 4-pole relay with mechanical coupling. The Gruner Relay 802 ensures that all poles are either closed or open and reduces the total number of relays and actuators required. This allows significant savings in components, energy and costs. In addition, Relay 802, which is designed for AC charging of electric vehicles up to 22 kW and has a

high short-circuit resistance of ≥ 3 kA. It is available as a monostable or bistable version. Its particularly slim and flat design also ensures that it can be easily integrated on a printed circuit board. A 2-pole version for single-phase charging systems is also available. The Relay 802 thus offers greater cost efficiency and safety in wallboxes.



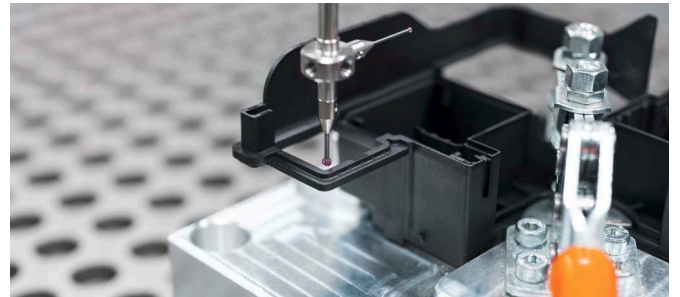
GRUNER DOES NOT HAVE
A CRYSTAL BALL.
**BUT WE WILL CONTINUE TO DEVELOP
OUR RELAY TECHNOLOGY TO REMAIN
UNRIVALLED, ROBUST AND COST-
EFFICIENT ALSO IN THE FUTURE.**

A GLOBAL LEADER – GRUNER RELAYS



Switch to innovations is the motto under which we bring our relays to the market and to the application. Today, Gruner is one of the last independent manufacturers of relays in Germany and the undisputed technology and world market leader in the field of bistable relays for energy management. Our mission is to push the boundaries of what is possible and provide you with customized solutions that exceed your requirements.

Short ways belong to Gruner, only in this way also adjustments in the construction are quickly possible and only in this way new solutions are created, which offer real advantages to our customers. We have proven this: because our relays combine quality and innova-



tion, economy and functionality, quantity flexibility and availability.

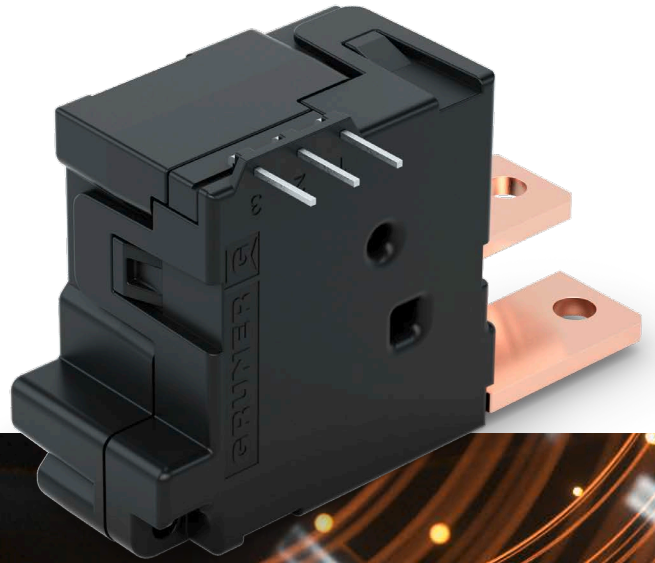
HIGH DEGREE OF VERTICAL INTEGRATION, HIGH QUALITY

Our years of experience along with our high level of vertical integration, intelligent test systems to accompany the production, as well as our high degree of flexibility have put us in the the favourable position as the innovation driver and quality provider in the relay sector. 100% quality and the development of genuine innovations are not mutually exclusives. We can prove this.

FOR A WIDE VARIETY OF OPTIONS

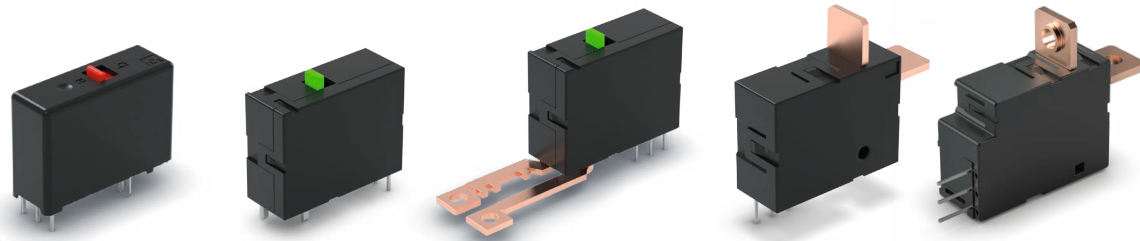
Smaller, but just as powerful – the 726 relay is an example of the consistent way we have continued to develop our 700 series, in great demand for a wide variety of energy management functions.

- > **Supply control**
- > **Demand management**
- > **Automation**



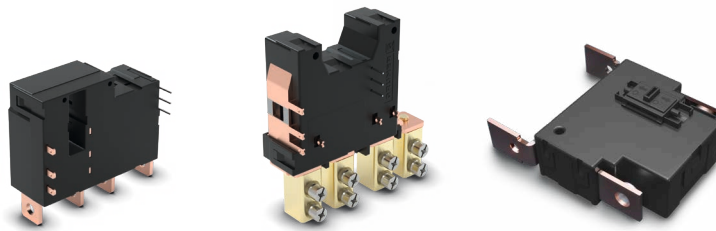
For all relays in our portfolio, we offer our customers the option of customizing the model. Our high vertical range of manufacture enables us to respond to many special customer requests in a short time, or to implement them. Most of the modifications are discussed, designed and realized in our company together with the customer within a few weeks.





SPST | 1 Form A | 1 NO

Type	707L	704L	704	716	717
Max. switching current	10 A / 140 µF	20 A / 200 µF	60 A / 250 VAC	80 A / 250 VAC	80 A / 250 VAC
Rated coil power	1.5 W (20 ms)	3 W (20 ms)	3 W (20 ms)	4.5 W (20 ms)	4.5 W (20 ms)
Dimensions	37.4 x 13.1 x 25 mm	39 x 15 x 29.3 mm	39 x 15 x 29.3 mm	30 x 16 x 40 mm	30 x 16 x 40 mm
Weight	21 g	36 g	36 g	45 g	45 g
Parallel contacts	-	-	-	-	-
Integrated shunt	-	-	•	•	•
Lamp load version	•	•	-	-	-

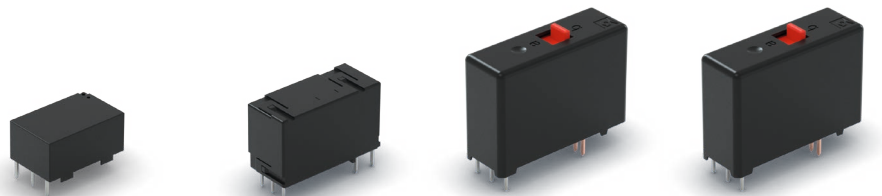


DPST | 2 Form A | 2 NO

Type	742 / 745	741 / 744	743
Max. switching current	80/100 A / 250 VAC	80/100 A / 250 VAC	200 A / 250 VAC
Rated coil power	8 W (30 ms)	8 W (30 ms)	24 W (30 ms)
Dimensions	48 x 23 x 66 mm	64 x 22 x 45 mm	75 x 70 x 30 mm
Weight	125 g	150 g	300 g
Parallel contacts	- / •	• / -	•
Integrated shunt	•	•	-
Terminal grid			

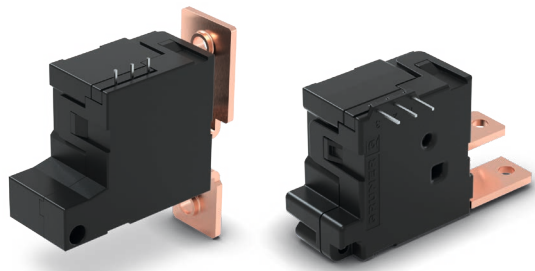
3PST | 3 Form A |

Type
Max. switching current
Rated coil power
Dimensions
Weight
Parallel contacts
Integrated shunt
Terminal grid

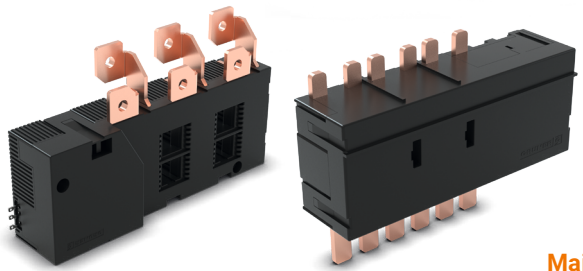


SPDT | 1 Form C | 1 CO

Type	710	715	706	707
Max. switching current	8 A / 250 VAC	16 A / 250 VAC	16 A / 250 VAC	20 A / 250 VAC
Rated coil power	300 mW (20 ms)	500 mW (20 ms)	1.5 W (20 ms)	1.5 W (20 ms)
Dimensions	22 x 14 x 12 mm	28.5 x 12.5 x 18 mm	37.4 x 13.1 x 25 mm	37.4 x 13.1 x 25 mm
Weight	5 g	12 g	21 g	21 g

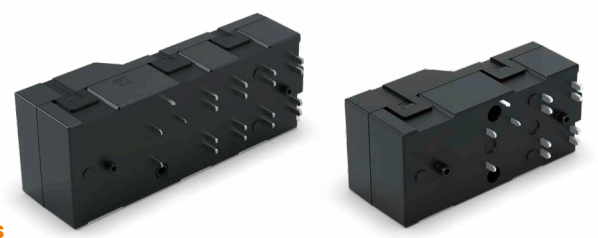


723 / 726	726 / 727
120/100 A / 250 VAC	100/120 A / 250 VAC
5.5 W (20 ms)	5.5 W (20 ms)
47 x 22 x 38 mm	41 x 22 x 37.5 mm
70 g	65 g
• / -	- / •
•	•
-	-



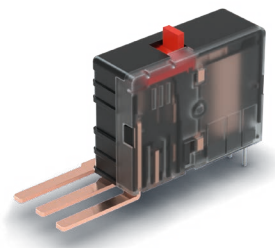
3 NO

733	736
100 A / 250 VAC	100 A / 250 VAC
16 W (30 ms)	16 W (30 ms)
132 x 77 x 30 mm	128 x 52 x 36 mm
300 g	360 g
•	•
•	•
⌈ ⌈ ⌈	⋈ ⋈ ⋈



Mains disconnect relays

Type	802	801
Max. switching current	32 A / 250 VAC	32 A / 250 VAC
Contact arrangement	4PST / 4 Form A / 4 NO	DPST / 2 Form A / 2 NO
Rated coil power	18 W	18 W
Dimensions	98.5 x 32.5 x 30 mm	73 x 32.5 x 30 mm
Weight	255 g	140 g
Auxiliary contact	•	•
Monostable version	•	•



703
25 A / 250 VAC
2 W (20 ms)
39 x 15 x 29.3 mm
36 g



DPDT | 2 Form C | 2 CO

Type	709
Max. switching current	10 A / 250 VAC
Rated coil power	1.5 W (20 ms)
Dimensions	37.4 x 13.1 x 25 mm
Weight	21 g

GRUNER RELAYS – CLEAR BENEFITS

With these outstanding properties, Gruner polarised latching relays deliver clear benefits for energy management.



BENEFITS OF LATCHING RELAYS

GREAT SWITCHING POWER WITH MINIMAL POWER CONSUMPTION

- › Power is only needed for the actual switching process
- › Only a fraction of the power consumed by a monostable relay
- › No change in switching position in the event of a power failure

GREAT SWITCHING RELIABILITY AND OPTIMISED SERVICE LIFE

- › No self-heating of the winding
- › Great dielectric strength
- › Great overload characteristics and short-circuit resistance in full compliance with international standards

GREAT RELIABILITY WITH A MINIMUM OF MECHANICAL COMPONENTS

- › High switching reliability through absolutely dependable achievement of the switching limit point thanks to optimised switching mechanisms
- › High contact force combined with low operating voltage
- › Rotational armature movement enables switching with low levels of impact and vibration

EXCEPTIONALLY WIDE RANGE OF SWITCHING POWERS

- › 8-200 A / 250 VAC
- › In accordance with international regulations and standards

GRUNER AG, headquartered in Wehingen with around 1,500 employees, based in Germany, Tunisia, Serbia and India, is an exceptional manufacturer of actuators, relays and solenoids. Our system solutions for building management, the automotive industry and metering industry are in demand around the world, featuring compelling innovation and quality.

GRUNER AG

Bürglestraße 15-17 | 78564 Wehingen | Germany

T +49 7426 948-0 | F +49 7426 948-200

info@gruner.de